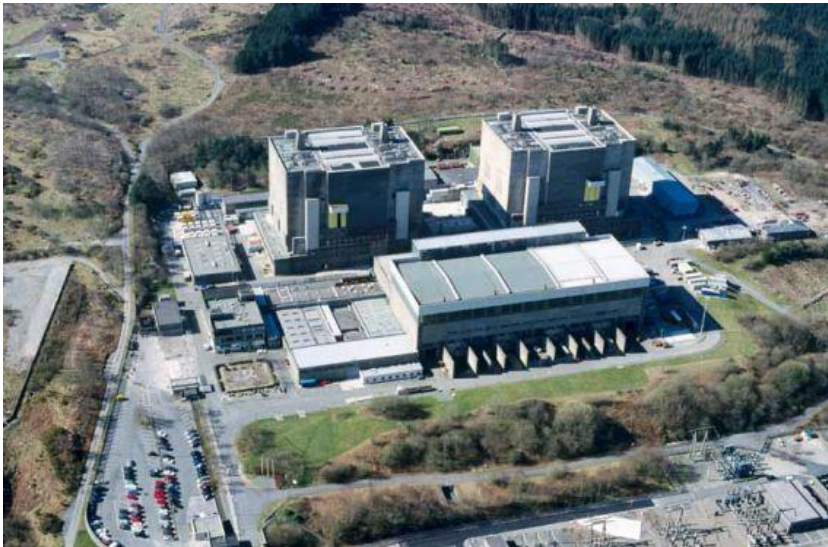


Cymru / Wales CifA Spring Day-School 2015

“MODERN”

Friday 26.6.2015

Trawsfynydd Nuclear Power Station,
The Lakeside Visitor Centre



The decommissioned Nuclear Power Station at Trawsfynydd will be the location of the CifA Dayschool on Friday 26th June 2015. Presentations and Lunch at the Visitor Centre. Follows signs from A470 to the Lakeside Visitor Centre

Trawsfynydd Site
Blaenau Ffestiniog,
Gwynedd,
LL41 4DT

Chartered Institute *for* Archaeologists

Miller Building, University of Reading, Reading, RG6 6AB
Telephone: 0118 378 6446
Email: admin@archaeologists.net Website
www.archaeologists.net



CifA | Grŵp Cymru
Wales Group

CifA | Grŵp Cymru
Wales Group

Cymru / Wales ClfA Spring Day-School 2015

“Modern”: a concept for the Research Agenda

Trawsfynydd Nuclear Power Station Visitor Centre

Programme:

- 10.40 Coffee and Arrivals
- 10.55 AGM (Cymru / Wales ClfA Group)
- 11.15 Welcome to the Dayschool (Neil Maylan)
- 11.20 ClfA – A Chartered Institute (Kate Geary)
- 11.55 20th century architecture in Gwynedd (Adam Voelcker)
- 12.35 “What is Modern then...” (Jenny Hall – Trysor)
- 13.15 LUNCH
- 14.15 A Brief presentation on the Nuclear Power Station (Stephen Briggs) followed by walk.
- 15.30 Discussion, resolutions etc.
- 16.00 Close & Depart

(order and times may vary)

The purpose of the Dayschool is to present the idea that the “Modern” is a serious concern to the archaeologist. How conceivably modern architecture and recent developments can easily be overlooked, marginalised and allowed to disappear without trace after a brief existence. Note the actual power station site is currently not accessible to visitors.

Cymru / Wales ClfA Spring Day-School 2015

“MODERN”

Friday 26.6.2015

Trawsfynydd Nuclear Power Station, Visitor Centre

Cost:

ClfA Members / Group members.....	£15.00
Non ClfA Members.....	£18.00

How to Book your place:

Phone or send John an e-mail or text confirming intention to attend and pay on the day (cheques payable to ClfA Cymru / Wales). Please state name and number of places required and ClfA status.

Booking confirmation will be made by return e-mail or text.

John Latham jernstlatham@gmail.com +44 (0) 7774 877834

Please note that places are limited so early booking would be advisable. Last minute cancellations or “no shows” may be invoiced by the ClfA Group

Price includes tea and coffee on arrival and buffet lunch. Vegetarian Food is included in the lunch menu. Anyone with special dietary requirements should notify John at least one week prior to the Dayschool.

This is a ClfA CPD Accredited Dayschool – Certificate of Attendance available.